

Intent

Geography is essentially about understanding the world we live in. It helps to provoke and provide answers to questions about the natural and human aspects of the world. At Coombe Hill, children are encouraged to develop a greater understanding and knowledge of the world, as well as their place in it. The geography curriculum enables children to develop knowledge and skills that are transferable to other curriculum areas. Geography is an investigative subject, which develops an understanding of concepts, knowledge and skills. Our intent, when teaching geography, is to inspire in children a curiosity and fascination about the world and people within it; to promote the children's interest and understanding of diverse places, people, resources and natural and human environments, together with a deep understanding of the Earth's key physical and human processes.

Locational knowledge
Place knowledge
Human and physical
geography
Fieldwork

Our Whole School Geography Journey

The UK

Year
3



To name and locate countries and cities in the UK on a map.

Study of the Isles of Scilly to understand geographical similarities and differences.

To understand types of settlements, land use, the structure of the earth, hills and mountains

To use simple compass directions, 4-figure grid references, simple sketch maps, symbols and keys. To observe and measure human and physical features on the school grounds and present findings.



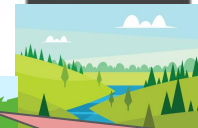
Europe

Year
4

Study of a European country of their choice to understand geographical similarities and differences

To name and locate countries and cities within Europe on a map.

To use the 8 compass points, 4 and 6-figure grid references, use of keys, symbols, detailed sketch maps. observe and measure human and physical features in the local area and present findings.



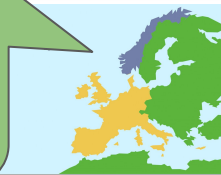
South America

Year
5

To name and locate countries and cities within South America on a map.



To understand the climate zones across Europe, formation of volcanoes features of rivers, the water cycle.



To understand longitude, latitude and locate the Equator, Tropics of Cancer, Capricorn, Arctic and Antarctic Circle and time zones.

North America

Year
6

Study of Brazil to understand geographical similarities and differences.

Economic activity including trade links, and the distribution of natural resources including energy, food, minerals and water



To name and locate countries and cities within North America on a map as well as seas and oceans across the world.

To understand the meaning of biomes and vegetation belts as well as the reason and impact of earthquakes.

End of KS2



Children should have a love of Geography as well as an excellent knowledge of where places are and what they are like. They should leave with an extensive base of geographical knowledge and vocabulary. In addition, to have real sense of curiosity to find out about the world and their local area.